

Having trouble viewing this email? [Click here](#)



Forward this email

CDCR NEWS



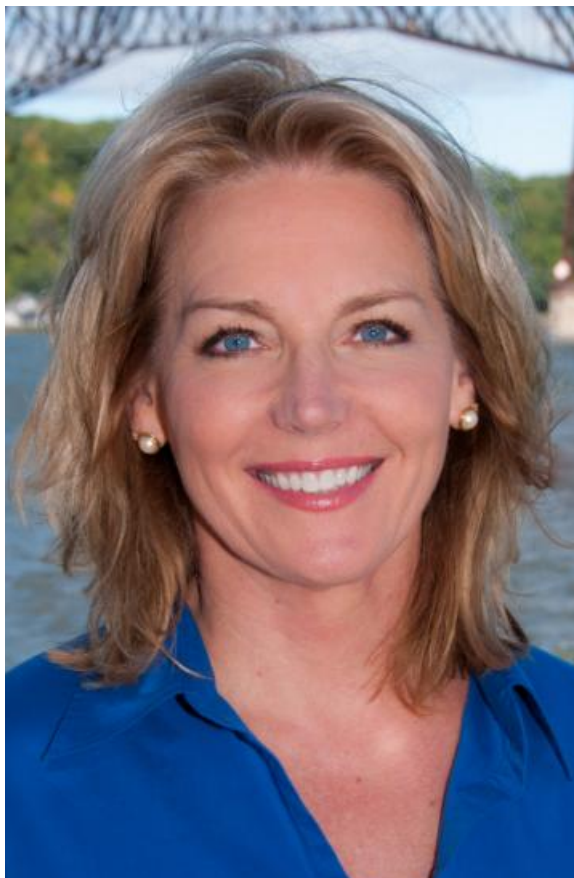
**Elizabeth Waldstein-Hart:
Next Up In Reshaping
Rochester Series!**

Join us on March 25th!

March 2015

In This Issue

Reshaping Rochester
Lecture with Elizabeth
Waldstein-Hart



Elizabeth Waldstein-Hart has served as Walkway Over the Hudson's Executive Director for the last three and a half years. Walkway Over the Hudson is a non-profit group that works to support and improve the Walkway Over the Hudson State Historic Park, a repurposed railroad bridge in Poughkeepsie, NY. At 212 feet tall and 1.28 miles long, Walkway is the longest elevated pedestrian bridge in the world, welcoming over 700,000 visitors each year.

During Waldstein-Hart's tenure, the Walkway organization and its responsibilities have grown dramatically. Under Waldstein-Hart's direction, Walkway has raised competitive grant funding to support major programmatic and capital initiatives such as the Dutchess Rail Trail connection, Waterfront Elevator, and many Walkway Master Plan improvements (including benches,

[Gallery Exhibition](#)

[Design Fund: Ibero Project Update](#)

[Lee Quill Lecture: A Success!](#)

[Tati's Updates](#)

lighting, signage, the Washington Street staircase, and East and West Pavilions.) She instituted the Walkway Volunteer Ambassador Program, formulated a new strategic plan, completed the second Camoin Economic Impact Study, and is implementing the "Walkway as Gateway to Success initiative".

"Crossing Over"

Elizabeth Waldstein-Hart

March 25th, 7-9pm

Gleason Works Auditorium (1000 University Ave)

Tickets are now on-sale!

Buy Now

For those who attended our last Reshaping Rochester Lecture with Lee Quill: Please help us by filling out a short survey [HERE](#).

For a list of our complete 2015 schedule [click here](#)

Gallery Exhibition: On Display Now!



The Community Design Center Rochester in conjunction with the annual award-winning Reshaping Rochester lecture series, presents "Connecting Spaces/ Connecting Places" an exhibition about corridors and the role that they play in revitalization and connectivity in neighborhoods and their metropolitan areas.

This exhibition is a collaborative venture highlighting projects associated with this year's Reshaping Rochester Series guest speakers and located in states that include Colorado, Minnesota, Michigan, Virginia, Georgia, Connecticut and New York. These projects have been transformative and had a positive impact on city streets, elevated walkways, riverfronts and bridges, creatively connecting communities.

This exhibit is on display through June 2015 in the CDCR Design Gallery
The CDCR Gallery is open daily from 9am-5pm. We suggest calling before visiting.

Development/Design Fund - Ibero Project

Update



The Community Design Center would like to update you on the progress of a recent project funded by a grant through our Development/ Design Fund Program. The Ibero - American Development Corporation (IADC) was awarded funding in order to evaluate the feasibility of creating a community center at one of two locations in the El Camino Revitalization Area. The decision to look at both sites was made because each site would independently address the needs of two distinct neighborhoods within the El Camino area. Both sites, 200 Clifford Avenue and 85 Avenue E, present separate challenges and opportunities.

The decision was made at initial scoping meetings to focus on the building at 200 Clifford Avenue. The building is an approximately 13,000 square foot vacant warehouse space that will be re-imagined as a multi-use community space, providing meeting spaces and other community resources. The site is centrally located in the El Camino Revitalization Area and is adjacent to the El Camino Trail, Conkey Corner Park, and the El Camino Estates I and II, all areas of improvement in the neighborhood.

Working extensively with residents, there has been consensus to develop a sustainable community site as the next step in neighborhood progress. The residents have outgrown existing spaces and it is difficult to find central neighborhood community spaces for meetings and other activities. IADC, along with Project Hope will continue its community engagement campaign to help guide the course of the project needs and programming.

They are seeking architectural and planning services to develop plans, renderings, cost estimates and phasing strategies will be used to gain community support and secure funding

for the project. They are currently developing a Request For Proposal and reviewing potential consultants for the pre-development process. Stay tuned for progress updates on this project.

The Development/Design Fund Program has been generously supported by the Louis. S. and Molly B. Wolk Foundation, the Max and Marion Farash Charitable Foundation, and the New York State Council on the Arts. To learn more about the Development/Design Fund please visit the program website [here](#) for more information on what is offered, past projects, and the upcoming Spring 2015 grant cycle.



*LOUIS S. &
MOLLY B. WOLK
FOUNDATION*



For more information about the Design Fund [click here](#).

Lee Quill Lecture: A Success!

Thank you to everyone who attended!



"Connecting Spaces/Connecting Places," our 10th Annual Reshaping Rochester Series, continues to inspire great conversations! Thanks to all who joined us on February 25th for "Re-Greening the Living City" with Lee Quill, who shared with us the power of a citizen-based plan geared to heal a challenged neighborhood.

Let us know your thoughts! Fill out our survey [here](#) to give us your feedback on our latest lecture.





Tati's Updates

We've been lucky to receive an outpouring of interest in volunteering with the Design Center!

Thanks to all who have reached out so far, and keep an eye on your inboxes for upcoming opportunities related to our 10th Annual Reshaping Rochester Series. There's plenty to be done, and we look forward to working with you!

Are you in the middle of your pre-spring spring cleaning? The Design Center is currently seeking a donation of a shredder for our office. Contact us at admin@rrcdc.org or 585-271-0520 if you are interested in donating.

Tatiana

[Forward this email](#)

STAY CONNECTED



Contributions can also be made through **United Way** by [clicking here](#).
Please use CDC donor designation number **2528**

[Forward this email](#)

 **SafeUnsubscribe**[™]

This email was sent to digiulio.angela@gmail.com by community@rrcdc.org |
[Update Profile/Email Address](#) | Rapid removal with [SafeUnsubscribe](#)[™] | [Privacy Policy](#).



Try it FREE today.

Community Design Center of Rochester | 1115 East Main St. | Rochester | NY | 14609